

APPLICATION FORM

Child's Name _____
 Sex ___ Age ___ Date of Birth _____
 School _____
 Completing grade _____ in June 2012
 Parent(s) _____
 Address _____
 _____ Zip _____
 Home phone _____
 E-mail Address _____
 Work phone, Mother _____
 Cell Phone _____
 Work Phone, Father _____

APPLYING FOR SLEEPOVER SESSION

A ___ B ___ C ___ D ___
 Second choice: _____
 Boys' Wilderness _____

APPLYING FOR DAY SESSION

1 ___ 2 ___ 3 ___ 4 ___ 5 ___ 6 ___
 7 ___ 8 ___

Sleepover Tuition \$625. per week \$ _____
 Day Tuition \$300 per week \$ _____
 Early Day \$60. per week \$ _____
 Late Day \$60. per week \$ _____
 Airport transportation (\$40.) \$ _____
 T-shirts included _____
 Child S (6-8) ___ Child M (10-12) -----
 Child L (14-16) ___ Adult M ___ Adult L ___
 Adult XL ___
 To the Scholarship Fund \$ _____
 Total Enclosed \$ _____
 Check # _____
 Credit Card# _____
 Exp. Date _____

Note: We want to reflect the diversity of our planet earth at Sprout Creek. We receive many requests for financial aid. You can help a child attend a Sprout Creek Farm Program by adding a donation to your tuition check. Your gift will be tax deductible and will be added to other gift funds dedicated to scholarship aid. If you choose to add a donation to your



SPROUT CREEK FARM

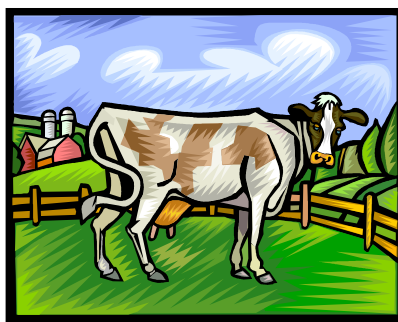
Sprout Creek Farm programs, both day and overnight, offer children an enjoyable and educational experience at a real working farm. Each week provides campers with group adventures as well as experience in animal care, gardening, homesteading crafts, and environmentally responsible decision-making.

The day programs are open to boys and girls, ages 6-11. The sleepover programs are open to girls who have completed grade 4 in the current school year. Enrollment in all sessions is limited in order to give each child maximum contact with the animals and individual attention from the staff.

DAY PROGRAMS

6-11 YEAR OLD GIRLS AND BOYS

Come join us for a week of learning and fun. You'll start your week by visiting some of our animals (sheep, cows, ducks, chickens, pigs, goats), and learning their special needs while you spend time with them. On some days you will help tend the garden. You'll learn how to bake bread the old-fashioned way. You'll do activities that help you develop teamwork skills. You'll have fun singing, swimming in the creek, or painting your face with the strange clay we find when we hike along the creek. The staff will teach you authentic farm crafts. Gathering eggs, getting dirty, and making friends are all in a day's work at Sprout Creek. We'll do our best to turn you into a real farmer on the days you spend with us. And we'll help you learn a little bit more about how each of us can take care of our fragile planet Earth.



The Sprout Creek staff are experienced teachers and farmers. They give priority to fostering co-operation skills, to making real farm experiences available to children and to giving young people the opportunity to learn by doing things themselves. They encourage young "farmers" to develop creativity and make a point of teaching children to see the value and rewards of real work.

Sprout Creek is rustic and charming. Children gather for fun, relaxation and craft work in the converted calf and dairy barns. Groups of children bake in our fully equipped kitchen, gather for animal classes in the cow and goat barns, or work in our extensive organic gardens. Children in the overnight programs live with teachers in a setting that includes sleeping cabins, a dining area, and modern bath facilities.



SLEEPOVER PROGRAM 10-12 Year Old Girls

You'll experience life as farmers do because you'll actually be LIVING at the Farm. You'll wake to the music of roosters crowing at the rising sun. You'll feed the animals, tend the garden, and gather eggs. You'll have the opportunity to milk cows AND goats. You'll make and sample the wonderful things that farmers make from milk: butter and cheese. You will learn traditional homesteading crafts such as felting and basketry. You'll swim in the creek. You might get to exercise your problem-solving skills rounding up escaped animals or improve your construction skills by repairing whatever allowed them to escape in the first place. You'll work hard - the way farmers always have - but at the end of the day you'll have the very farmerly satisfaction of preparing your own harvest for dinner, eating homemade fresh bread, and seeing "your" animals contentedly chewing their cud. In the evening, you'll sing around the campfire, take a walk as dusk settles into night, study the constellations, or join your cabin-mates to produce a skit. You'll make friends from all over our country and learn to care for the people, animals and plants on our planet Earth.

WEEKLONG SLEEPOVER PROGRAMS

For girls who are 10-12 or having completed grade 4

Session A: June 24- June 29

Session B: July 1- July 6

Session C: June 8 - July 13

Session D: July 15--July 20

Boys' Wilderness: August 12-17

Weeklong sessions begin on Sunday afternoon after 3:30PM and end on Friday afternoon at 2:00PM TUITION: \$ 625. PER WEEK

Full non-refundable tuition is required with application unless payment plan is arranged.

WEEKLONG DAY PROGRAMS

For Girls and Boys ages 6-11

Session 1: June 25-June 29

Session 2: July 2-July 6

Session 3: July 9-July 13

Session 4: July 16-July 20

Session 5: July 23-July 27

Session 6: July 30-August 3

Session 7: August 6-10

Session 8: August 13-August 17

Day sessions are from 9 AM until 4 PM. Early drop-off (8AM) and late pickup (5PM) can be arranged for an additional fee.

TUITION: \$350 PER WEEK

Early \$60 per week Late \$ 60 per week

Early/Late \$120 per week

Full tuition is required with application unless payment plan is arranged.

Sprout Creek Farm is owned and operated by the Religious of the Sacred Heart, and is a program of the Network of Sacred Heart Schools in the United States. Sprout Creek Farm welcomes children of every religion, race, color, national or ethnic origin. It does not discriminate in the administration of any of its programs: admission, education, or financial aid.



SPROUT CREEK FARM

34 Lauer Road

Poughkeepsie, NY 12603

(845)485-8438

www.sproutcreekfarm.org

education@sproutcreekfarm.org

Sprout Creek Farm 2012 Summer Programs

Sleepover Programs
for Girls ages 10-12

Boys' Wilderness Program
for Boys ages 12-14

Day Programs
for Girls and Boys ages 6-11

